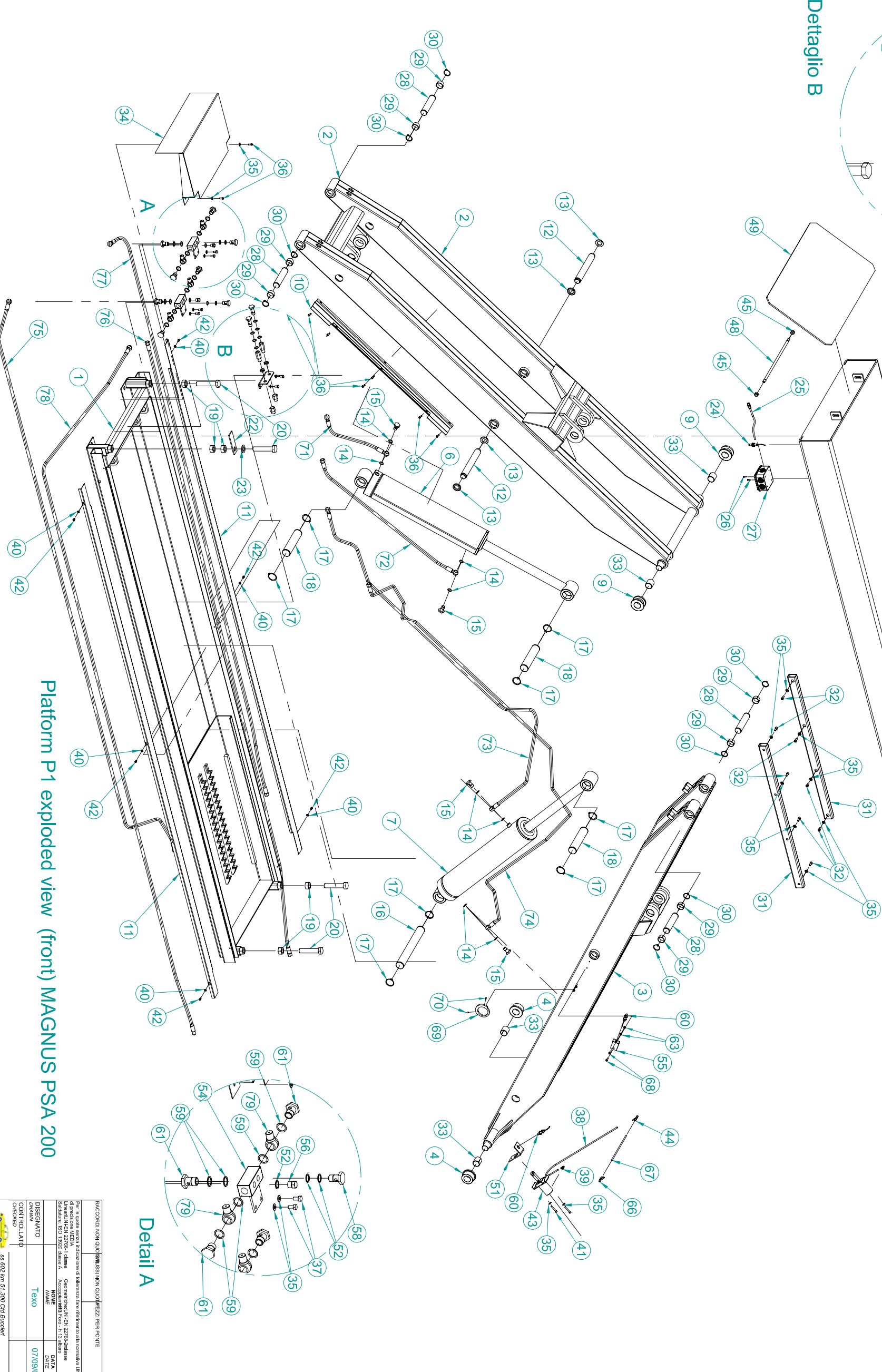


Dettaglio B



Detail A

Pos.	Part Nr	Description	Qty
1	10-080	Base Frame	1
2	10-082	External Arm	1
3	10-081	Internal Arm	1
4	20.0066	Arms lower guiding roller	2
6	40-0029	Hydraulic cylinder P1	1
7	40-0030	Hydraulic cylinder P2	1
9	20.0061	Arms top guiding roller	2
10	10-088	Hoses cover	1
11	10-087	Hoses cover	2
12	20.0018	Arms connecting pin	2
13	30-0044	Self locking ring nut M30x1.5 DIN 981	4
14	40-0020	Copper washer 3/8" 17x22x1.5	8
15	40-0006	Hydraulic fitting 3/8 gas	4
16	20.0020	Hyd.cylinder long support pin	1
17	30-0054	Elastic ring ø45 UNI7435	8
18	20.0021	Hyd.cylinder short support pin	3
19	30-0046	Nut M24 UNI-EN 24033	5
20	30-0053	Screw TE M24x120 UNI-EN 24017	4
21	10-149	Hydraulic fitting bracket	1
22	10-098	Self levelling bracket	1
23	30-0179	Plain washer 25 (x M24)	1
24	60-0113	Limit Switch NO Zmt	1
25	61-0044	Cable end 25, 8 pin connector (10mt)	1
26	30-0105	Screw TC M4 2x16	2
27	60-0132	Electric box 44004 (100x100x50)	1
28	20-0019	Arms connecting pin	4
29	30-0006	Borcola Autolubrificante ø35x20	8
30	30-0003	Elastic ring ø35 UNI 7435	8
31	10-097	Roller support	2
32	30-0063	Screw TCEI M8x20 UNI 5931	8
33	30-0033	Self lubricating bushing ø35x40	4
34	10-089	Base cover guard	18
35	30-0176	Washer M8 UNI-5932	18
36	30-0011	Screw TCEI M6x16 UNI-5931	8
37	30-0050	Screw TE M8x16 UNI-EN 24017	6
38	50-0007	Plastic hose 6x4 neutro	1
39	50-0019	"L" air turnable fitting M5 x T.6	1
40	30-0133	Washer 6 ZB 6.4x12x1.6	6
41	30-0141	Screw TCEI M6x40 UNI 5931	2
42	30-0071	Screw TCEI M6x10 UNI 5931	6
43	50-0046	Air cylinder	1
44	50-0005	"T" quick air fitting "T" x T.6	1
45	30-0014	Self locking nut M12 UNI 7473	2
46	20-0026	Hydraulic fitting M/F 3/8"	2
47	20-0027	Nut for hyd. fitting 3/8"	2
48	20-0060	Movable ramp pin	1
49	10-091	Ramp	1
50	10-349	Front ramp	1
51	10-165	Sensor adjusting bracket	1
52	40-0020	Copper washer 3/8" 17x22x1.5	11
53	30-0341	Washer M20 UNI-6592	8
54	20-0022	Hoses connecting block	1
55	10-047	Sensor adjusting bracket	2
56	40-0060	Male plug 3/8" TE ANSI B16-11	2
57	30-0057	Nut M20 UNI-EN 24033	3
58	40-0006	Hydraulic bolt 3/8 gas	3
59	40-0070	Copper washer 1/2" 21x27x1.5	10
60	60-0362	NO Proximity switch 6mt	2
61	40-0064	Hydraulic bolt 1/2" Gas	4
62	30-0079	Washer Grower . 20 (20.2x32.2x6)	8
63	30-0019	Nut M6 UNI-EN 24033	2
64	40-0063	Nipples F 3/8" M 1/2"	4
65	40-0005	Hydraulic bolt 3/8"	1
66	50-0005	"T" quick air connector x T.6	1
67	50-0007	Plastic pipe 6x4	2
68	30-0422	Screw TBEI M6x20 UNI-ISO 7380	1
69	10-205	Cam	1
70	30-0088	Dowel M5x10 UNI 5927	2
71	00-40208	Hose R2 3/8" L=550 OF 3/8" OF 3/8"	1
72	00-40008	Hose R2T 3/8" L=1120 OF 3/8" FG 3/8"	1
73	00-40200	Hose R2 3/8" L=2270 OF 3/8" OF 3/8"	1
74	00-40054	Hose R2T 3/8" L=3280 OF 3/8" FG 3/8"	1
75	00-40202	Hose R2 3/8" L=4110 OF 3/8" FG 3/8"	1
76	00-40203	Hose R2 3/8" L=4110 FG 3/8" FG 3/8"	1
77	00-40207	Hose R2 3/8" L=3900 OF 3/8" FG 3/8"	1
78	00-40205	Hose R2 3/8" L=3200 MF 3/8" OF 3/8"	1
79	40-0114	Fixed eye 1/2" fillet 1/2"	2

RAACCORDI NON QUOTABILI PER I PARTI PER PUNTE

MATERIALE

MODELLO Platform P1 (front)

MODELLO Magnus PSA 200

MODELLO Texo

DATA DATE 07/09/05

SCALE 1:1

FILE P1 Magnus 200 ant .dft

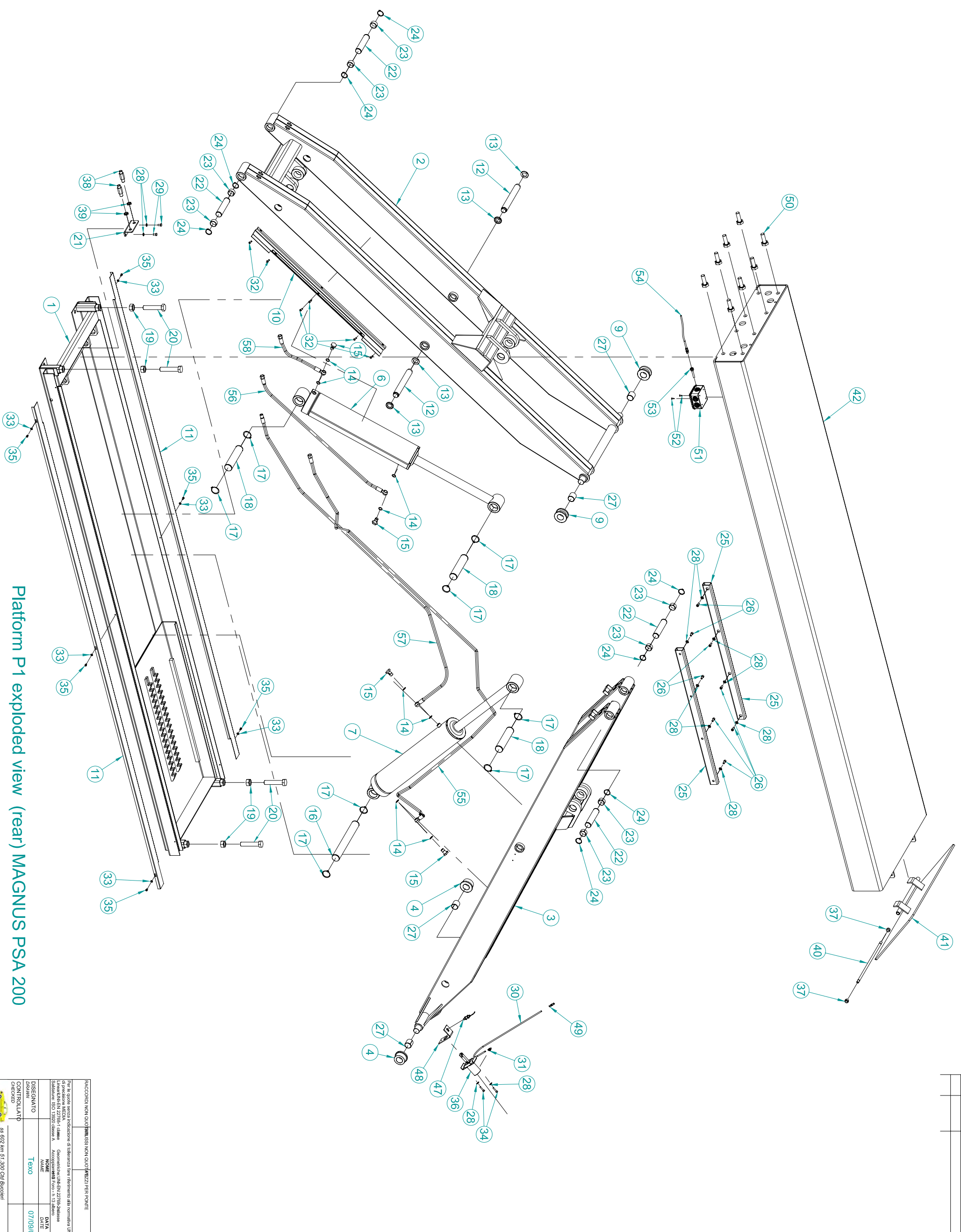
Platform P1 exploded view (front) MAGNUS PSA 200

Per le quote senza indicazione di tolleranza fare riferimento alle norme UNI EN ISO 2768-MS. Contattare il fornitore per le tolleranze. Contattare il fornitore per le tolleranze. Contattare il fornitore per le tolleranze.

TEKO

ss 602 km 51,380 Cd Bascarello
 Tel. 085.9771090 / fax 085.9774122
 email: info@teko.it

N° rev.	DATA	DESCRIZIONE MODIFICA	RESPONSABILE	N° ODM



Pos.	Part Nr.	Description	Qty.
1	10-080	Base Frame	1
2	10-082	External Arm	1
3	10-081	Internal Arm	1
4	20-0066	Arms lower guiding roller	2
6	40-0026	Hydraulic cylinder P1	1
7	40-0030	Hydraulic cylinder P2	1
9	20-0061	Arms top guiding roller	2
10	10-088	Hoses cover	1
11	10-087	Hoses cover	2
12	20-0018	Arms connecting pin	2
13	30-0044	Self locking ring nut M30x1.5 DIN 981	4
14	40-0020	Copper washer 3/8" 17x22x1.5	8
15	40-0006	Hydraulic fitting 3/8 gas	4
16	20-0020	Hyd.cylinder long support pin	1
17	30-0054	Elastic ring ø45 UNI-7435	8
18	20-0021	Hyd.cylinder short support pin	3
19	30-0046	Nut M24 UNI-EN 24033	5
20	30-0053	Screw TE M24x120 UNI-EN 24017	4
21	10-149	Hydraulic fitting bracket	1
22	20-0019	Arms connecting pin	4
23	30-0006	Self lubricating bushing ø35x20	8
24	30-0003	Elastic ring ø35 UNI 7435	8
25	10-097	Roller support	2
26	30-0063	Screw TCEIM6x20 UNI 5931	8
27	30-0033	Self lubricating bushing ø35x40	4
28	30-0176	Washer M8 UNI-6592	12
29	30-0050	Screw TE M8x16 UNI-EN 24017	2
30	50-0007	Plastic hose øx4 neutro	1
31	50-0019	"L" air turnable fitting M5 x 1.6	1
32	30-0011	Scarav TCEIM6x16 UNI-5931	6
33	30-0133	Washer 6 ZB 6.4x12x1.6	6
34	30-0114	Screw TCEIM6x30 UNI 5931	2
35	30-0071	Screw TCEIM6x10 UNI 5931	6
36	50-0046	Air cylinder	1
37	30-0014	Self locking nut M12 UNI 7473	1
38	20-0163	Hydraulic fitting M/M 3/8"	2
39	20-0027	Nut for hyd. fitting 3/8"	2
40	20-0060	Movable ramp pin	1
41	10-091	Ramp	1
42	10-351	Rear platform	1
47	60-0362	Prossim. NO emt.	1
48	10-165	Sensor adjusting bracket	1
49	50-0034	Air fitting XT6	1
50	30-0056	Screw TE M20x60 UNI-EN 24017	8
51	60-0132	Electric box (100x100x50)	1
52	30-0105	Screw TC M4 2x16	2
53	61-0025/1	8 pins plug + cable	1
54	61-0026/6	Cable 8x0.25 with 8 pins connector (6ht)	1
55	00-4020/4	Hose R2 3/8" L=3620 OF 3/8" FG 3/8"	1
56	00-4000/8	Hose R2 3/8" L=1120 FG 3/8" OF 3/8"	1
57	00-4020/6	Hose R2 3/8" L=4420 OF 3/8" MF 3/8"	1
58	00-4020/1	Hose R2 3/8" L=530 OF 3/8" FG 3/8"	1

RACCORDI NON QUALIFICATI PER PUNTE

MATERIALE

MODELLO Platform P1 (rear)

MODELLO Magnus PSA 200

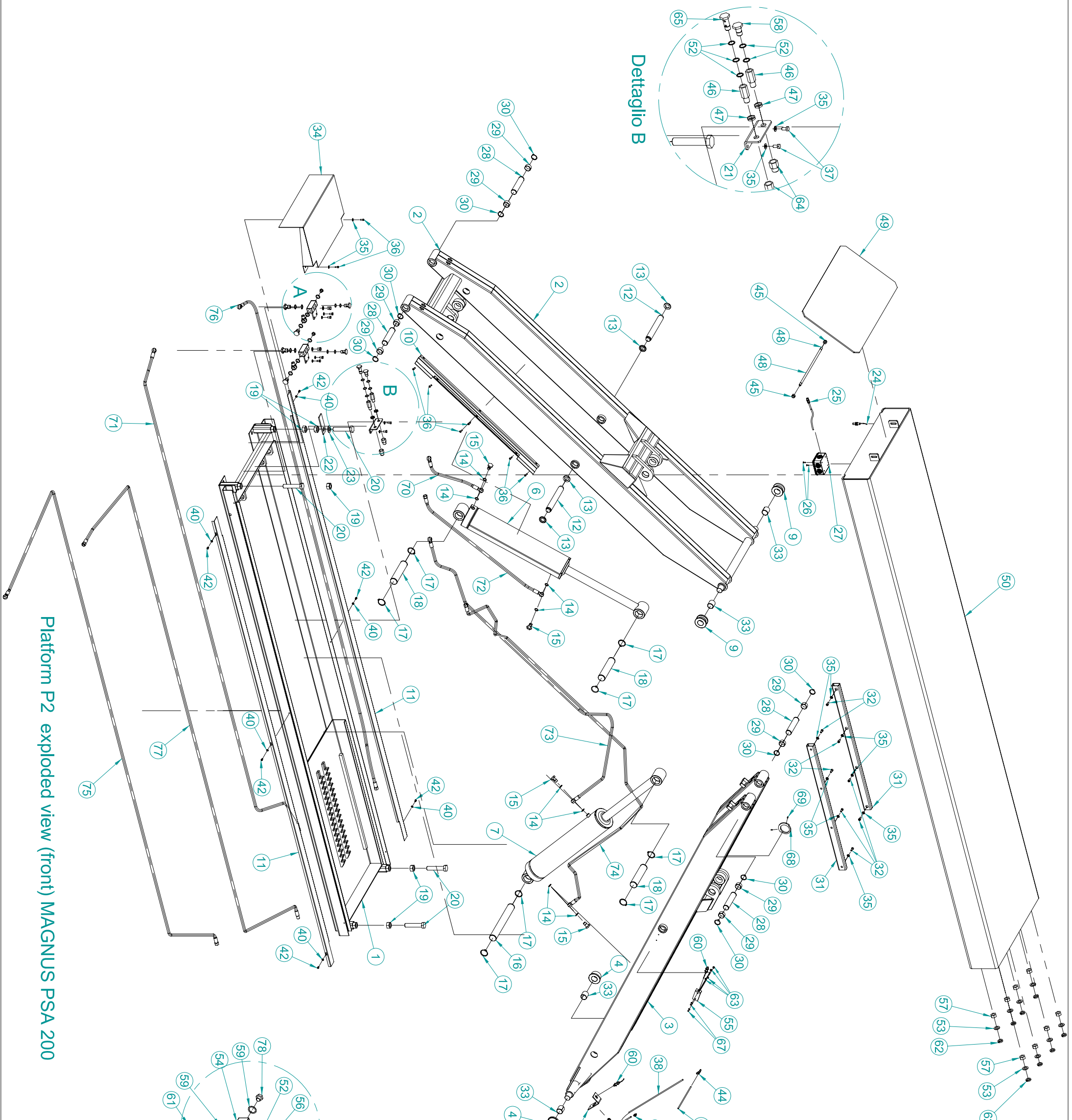
DESIGNATO	DATA
TEKO	07/09/05

FILE	SCALE	REV
File P1 Magnus 200 post. dft	1:1	0

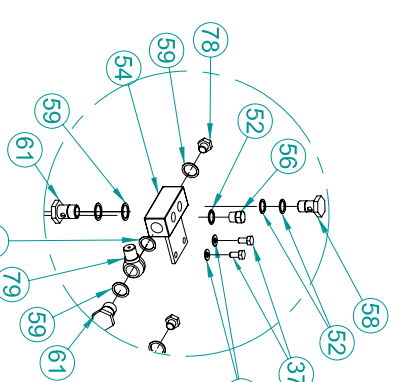
Platform P1 exploded view (rear) MAGNUS PSA 200

TEKO
 ss 602 km 51,380 Cd Buccheri
 Tel. 085.9771090 / fax 085.9774122
 email: info@teko.it

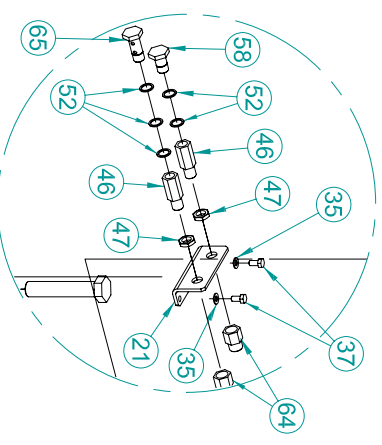
N° REV.	DATA	DESCRIZIONE MODIFICA	RESPONSABILE	N° ODM



Detail A



Dettaglio B



Pos.	Part N°	Description	Q.ty
1	10-080	Base Frame	1
2	10-082	External Arm	1
3	10-081	Internal Arm	1
4	20-0066	Arms lower guiding roller	2
6	40-0029	Hydraulic cylinder P1	1
7	40-0030	Hydraulic cylinder P2	1
9	20-0061	Arms top guiding roller	2
10	10-088	Hoses cover	1
11	10-087	Hoses cover	2
12	20-0018	Arms connecting pin	2
13	30-0044	Self locking ring nut M30x1.5 DIN 981	4
14	40-0020	Copper washer 3/8" 17x22x1.5	8
15	40-0006	Hydraulic fitting 3/8 gas	4
16	20-0020	Hyd.cylinder long support pin	1
17	30-0054	Elastic ring ø45 UNI-7435	8
18	20-0021	Hyd.cylinder short support pin	3
19	30-0046	Nut M24 UNH-EN 24033	5
20	30-0053	Screw TE M24x120 UNH-EN 24017	4
21	10-149	Hydraulic fitting bracket	1
22	10-098	Self leveling bracket	1
23	30-0179	Plain washer 25 (x M24)	1
24	60-0113	Limit Switch NO 2mt	1
25	61-0044	Cable 6x0.25, 8 pin connector (10mt)	1
26	30-0105	Screw TC M4.2x16	2
27	60-0132	Electric box 44004 (100x100x50)	1
28	20-0019	Arms connecting pin	4
29	30-0006	Boccola Autolubrificante ø35x20	8
30	30-0003	Elastic ring ø35 UNI 7435	8
31	10-097	Roller support	2
32	30-0063	Screw TCØ1 M8x20 UNI 5931	8
33	30-0033	Self lubricating bushing ø35x40	4
34	10-089	Base cover guard	1
35	30-0176	Washer M8 UNI-6592	18
36	30-0011	Screw TCØ1 M6x16 UNI-5931	1
37	30-0050	Screw TE M8x16 UNH-EN 24017	6
38	50-0007	Plastic hose 6x4 neutro	1
39	50-0019	"L" air turnable fitting, M5 x T.6	1
40	30-0133	Washer 6 ZB 6.4x12x1.6)	6
41	30-0141	Screw TCØ1 M6x40 UNI 5931	2
42	30-0071	Screw TCØ1 M6x10 UNI 5931	6
43	50-0046	Air cylinder	1
44	50-0005	"T" quick air fitting "T" x T.6	1
45	30-0014	Self locking nut M12 UNI 7473	2
46	20-0026	Hydraulic fitting M/F 3/8"	2
47	20-0027	Nut for hyd. fitting 3/8"	2
48	20-0060	Movable ramp pin	1
49	10-091	Ramp	1
50	10-049	Front ramp	1
51	10-165	Sensor adjusting bracket	1
52	40-0020	Copper washer 3/8" 17x22x1.5	11
53	30-0341	Washer M20 UNI-6592	8
54	20-0022	Hoses connecting block	2
55	10-047	Sensor adjusting bracket	2
56	40-0060	Male plug 3/8" TE ANSI B16-11	8
57	30-0057	Nut M20 UNH-EN 24033	2
58	40-0006	Hydraulic bolt 3/8 gas	3
59	40-0070	Copper washer 1/2" 21x27x1.5	10
60	60-0362	NO Proximity switch 6mt	2
61	40-0064	Hydraulic bolt 1/2" Gas	4
62	30-0079	Washer Grower . 20 (20.2x32.2x5)	8
63	30-0019	Nut M6 UNH-EN 24033	4
64	40-0063	Nipples F 3/8" M 1/2"	2
65	40-0005	Hydraulic bolt 3/8"	1
66	50-0007	Plastic pipe 6x4	1
67	30-0422	Screw TBØ1 M6x20 UNH-ISO 7380	2
68	10-205	Cam	1
69	30-0088	Dowel M5x10 UNI 5927	2
70	00-40208	Hose R2 3/8" L=550 OF 3/8" OF 3/8"	1
71	00-40202	Hose R2 3/8" L=4110 OF 3/8" FG 3/8"	1
72	00-40008	Hose R21 3/8" L=1720 OF 3/8" FG 3/8"	1
73	00-40200	Hose R2 3/8" L=2270 OF 3/8" OF 3/8"	1
74	00-40054	Hose R21 3/8" L=3280 OF 3/8" FG 3/8"	1
75	00-40209	Hose R2 3/8" L=5450 OF 3/8" FG 3/8"	1
76	00-40207	Hose R2 3/8" L=3900 OF 3/8" FG 3/8"	1
77	00-40210	Plug R2 3/8" L=4900 MF 3/8" FG 3/8"	1
78	40-0061	Plug 1/2"	2
79	40-0114	Fixed eye 1/2" Rivet 1/2"	2

RACCOMANDO NON QUALIFICHATI PER PUNTE
 MATERIALI
 MODELLO **Platform P2 (front)**
 FILE P2 Magnus PSA 200
 SIZE 105x180x2000
 SCALE 0,0000 Kg
 FILE P2 Magnus 200 ant. dft
 SCALE 0,0000 Kg
 FILE P2 Magnus 200 ant. dft
 SCALE 0,0000 Kg

Platform P2 exploded view (front) MAGNUS PSA 200

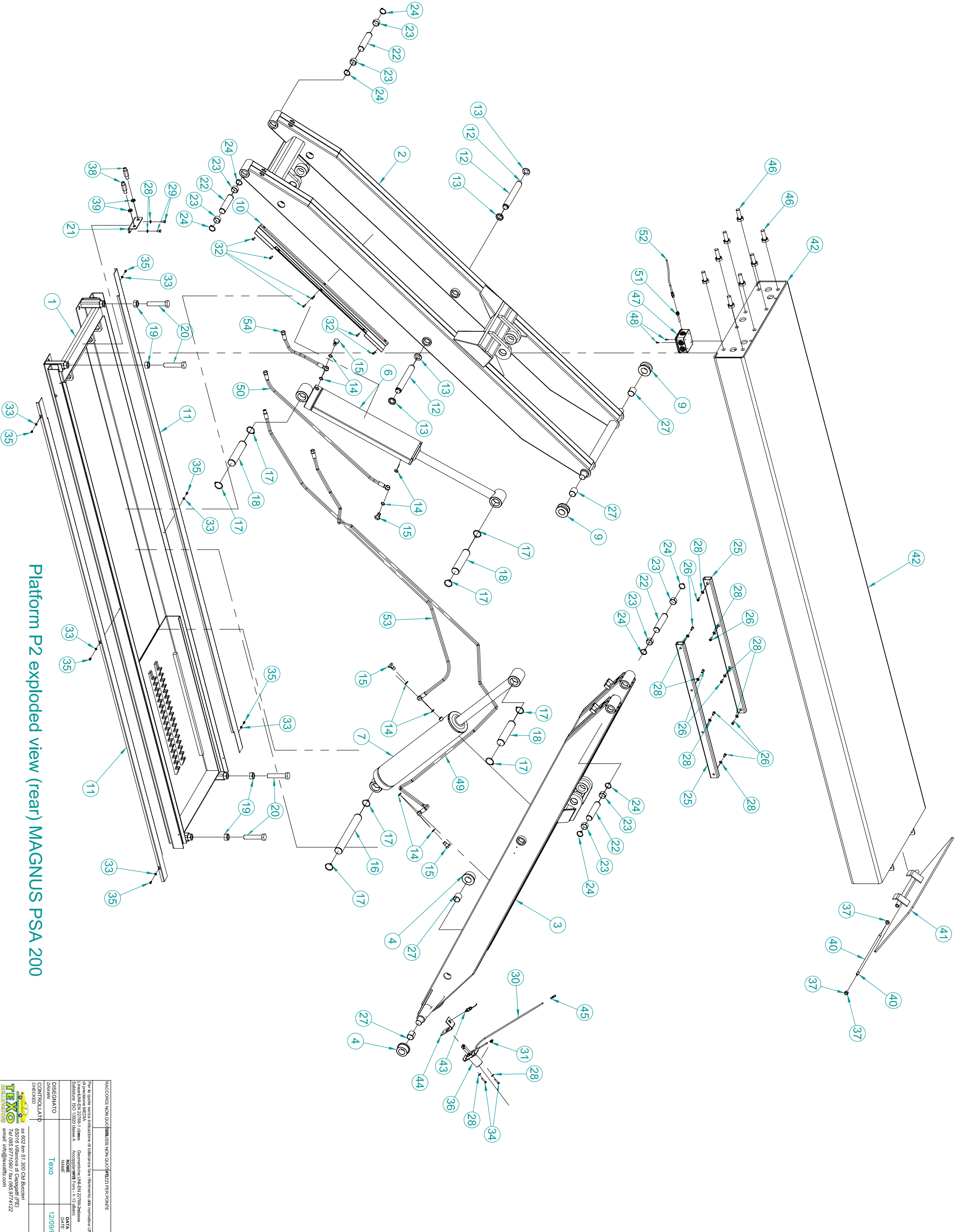
DISSEGNO	DATA
TEKO	12/09/05

MODELLO	DATA
Magnus PSA 200	12/09/05

SCALE	REV
0,0000 Kg	0

Per le quote senza produzione di riferimento, il riferimento alla norma UNI EN 1090-1 è obbligatorio.
 Per le quote con produzione di riferimento, il riferimento alla norma UNI EN 1090-1 è obbligatorio.
 Disegnato da: **TEKO**
 Tel: 085.9777090 / Fax: 085.9774142
 Email: info@teko.it

N° rev.	DATA	DESCRIZIONE MODIFICA	RESPONSABILE	N° ODM



Pos.	Part Nr	Description	Qty
1	10-080	Base Frame	1
2	10-082	External Arm	1
3	10-081	Internal Arm	1
4	20-0066	Arms lower guiding roller	2
6	40-0029	Hydraulic cylinder P1	1
7	40-0030	Hydraulic cylinder P2	1
9	20-0061	Arms top guiding roller	2
10	10-088	Hoses cover	1
11	10-087	Hoses cover	2
12	20-0018	Arms connecting pin	2
13	30-0044	Self locking ring nut M30x1.5 DIN 981	4
14	40-0020	Copper washer 3/8" 17x22x1.5	8
15	40-0006	Hydraulic fitting 3/8 gas	4
16	20-0020	Hyd.cylinder long support pin	1
17	30-0054	Elastic ring ø45 UNI-7435	8
18	20-0021	Hyd.cylinder short support pin	3
19	30-0046	Nut M24 UNI-EN 24033	5
20	30-0053	Screw TE M24x120 UNI-EN 24017	4
21	10-149	Hydraulic fitting bracket	1
22	20-0019	Arms connecting pin	4
23	30-0006	Self lubricating bushing ø35x20	8
24	30-0003	Elastic ring ø35 UNI 7435	8
25	10-097	Roller support	2
26	30-0063	Screw TCEIM6x20 UNI 5931	8
27	30-0033	Self lubricating bushing ø35x40	12
28	30-0176	Washer M8 UNI-6592	4
29	30-0050	Screw TE M8x16 UNI-EN 24017	2
30	50-0007	Plastic hose øx4 neutro	1
31	50-0019	T air turnable fitting M5 x 1.6	1
32	30-0011	Screw TCEIM6x16 UNI-5931	6
33	30-0133	Washer 6 ZB 6.4x12x1.6	6
34	30-0114	Screw TCEIM6x30 UNI 5931	2
36	50-0046	Air cylinder	1
37	30-0014	Self locking nut M12 UNI 7473	2
38	20-0163	Hydraulic fitting M/M 3/8"	2
39	20-0027	Nut for hyd. fitting 3/8"	2
40	20-0060	Movable ramp pin	1
41	10-091	Ramp	1
42	10-351	Rear platform	1
43	60-0362	Prossim. NO emt.	1
44	10-165	Sensor adjusting bracket	1
45	50-0034	Air fitting XT6	1
46	30-0056	Screw TE M20x60 UNI-EN 24017	8
47	60-0132	Electric box (100x100x50)	1
48	30-0105	Screw TC M4 2x16	2
51	61-0025/1	8 pins plug + cable	1
52	61-0026/6	Cable 8x0.25 with 8 pins connector (6ht)	1
49	00-4020/4	Hose R2 3/8" L=3620 OF 3/8" FG 3/8"	1
50	00-4000/8	Hose R2 3/8" L=1120 FG 3/8" OF 3/8"	1
53	00-4020/6	Hose R2 3/8" L=2420 OF 3/8" MF 3/8"	1
54	00-4020/1	Hose R2 3/8" L=530 OF 3/8" FG 3/8"	1

RACCORDI NON QUALIFICATI NON QUALIFICATI PER PUNTE

MATERIALE

MODELLO Magnus PSA 200

FILE P2 Magnus 200 post. dft

SCALE 1:1

REV 0

TECXO

ss 602 km 51,380 Cd Buccheri
 Tel. 085.9771090 / fax 085.9774122
 email: info@texofit.com

Platform P2 exploded view (rear) MAGNUS PSA 200